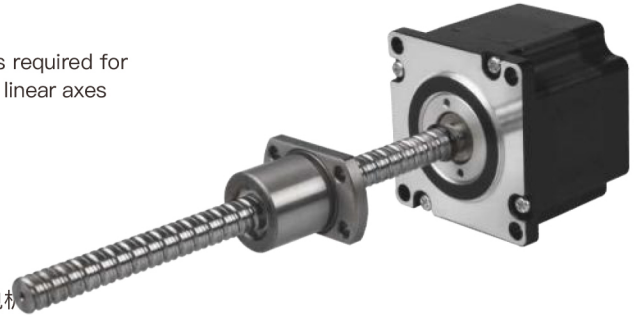


86mm法兰外部驱动式滚珠直线步进电机

External Linear Actuator With Ball Screw – NEMA 34

高扭矩nema34混合式步进电机+滚珠丝杠。 直接连接无需耦合。 提供内置编码器版本。 精密线性伺服轴的理想选择

High torque nema34 hybrid stepper motor + ball screw. No coupling is required for direct connection. Built-in encoder version available. Ideal for precision linear axes



◎ Feature

- Integrated ball screw & Nema34 motor 集成滚珠丝杠和Nema34电机
- Longer life and higher accuracy 更长的寿命和更高的精度
- Different lengths available 提供不同长度
- A built-in encoder available. 提供内置编码器。
- Motor Controllers / Drives available 电机控制器/驱动器可用
- 0.0025mm/step with our controller 使用我们的控制器为0.0025mm /步

◎ VERSIONS

系列代码 Series models	34HS76	34HS95
相电流 Current per Winding A	4.0	6.0
静力矩 Holding Torque mN.m	3.5	7.0
相电阻 Resistance per Winding Ohm	0.5	0.4
相电感 Inductance per Winding mH	3.7	3.8
转子惯量 Rotor Inertia gcm ²	1400	1700
电机重量 Weight kg	1.4	2.7
电机高度 Length “L” mm	76	98
螺杆长度 Screw length*L1	Different lengths available不同丝杆长度可选	
反馈装置 Feedback	Encoder(Closed-loop version)编码器（闭环伺服版本可选）	

* 衍生品可以与我们沟通 Derivatives can communicate with us

订货代号 ORDER IDENTIFIER

34HS76-LExx-BG1605-E2000-P/B/X/C

LExx =Externally driven Screw length xx mm

LExx =外部驱动式电机，丝杆长度xx毫米

BG1605 = Screw code Diameter 16mm Lead 5mm

BG1605 = 滚珠丝杠 直径16毫米 导程5毫米

E2000=Encoder (Optional E500~2000/BE17/SE16)

E2000=编码器（可选增量500~2000CPR/17位多圈绝对/16位单圈绝对）

P/B/X/C= (P-Handwheel B-Brake X-Rear output C-Customer Definition)

P/B/X/C= (P-手轮 B-刹车 X-后出轴 C-客户定义)

可选螺杆 Screw optional

Screw 丝杆代码	Diameter(MM)	Lead(MM) 导程	Step(MM) 步长
G1605	16	5	0.025
G1610	16	10	0.05
G1616	16	16	0.08
G2005	20	5	0.025
G2020	20	20	0.1

*实际行程: L1-1.6-螺母宽度A

*length: L1-1.6-Nut(A)

可选配件 ACCESSORIES

- ZK-ENC-500 Encoder Cable 0.5m
- Encoder 高精度编码器
- Motor Controllers / Drives 电机驱动控制器
- 编码器/控制器 规格多样，具体信息请与我们联系。 Multiple encoders/Drives supported, please contact us.

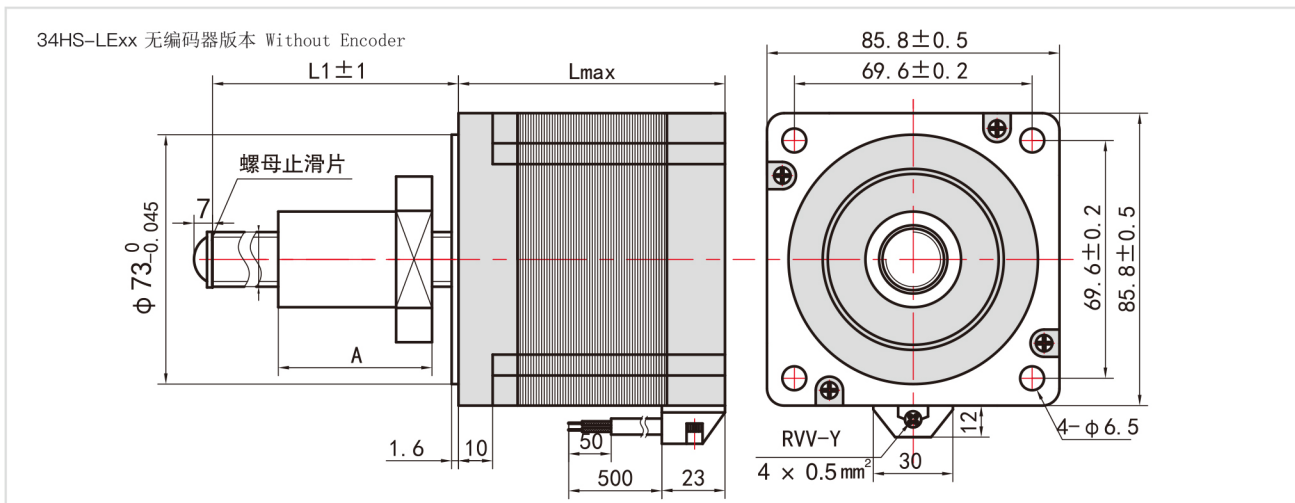
86mm法兰外部驱动式滚珠直线步进电机

External Linear Actuator With Ball Screw – NEMA 34

DIMENSIONS (IN MM)

*丝杆长度和端部加工（如轴承位）可以按用户要求加工生产

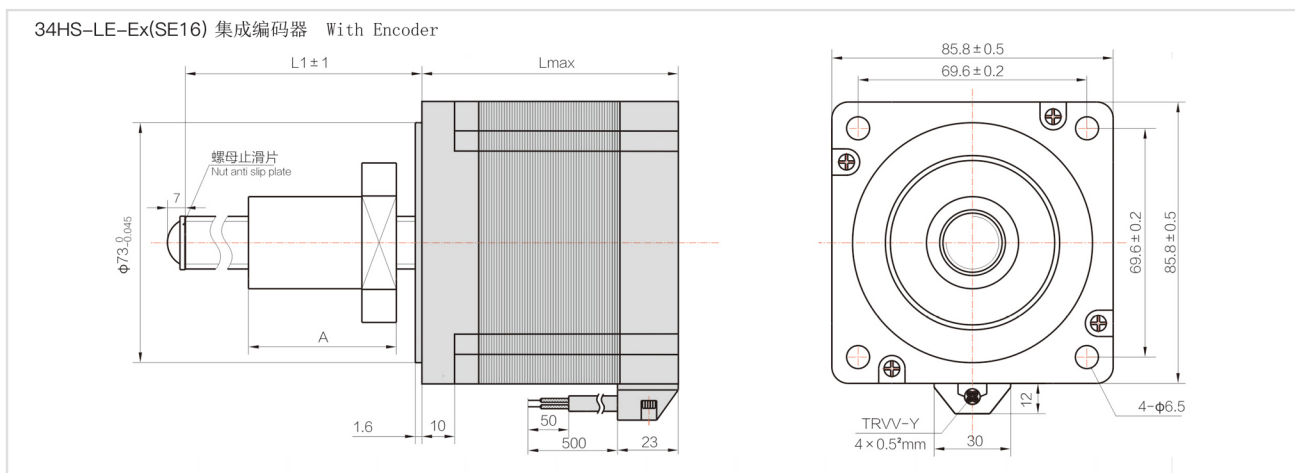
*Screw rod length and end processing (such as bearing position) can be processed and produced according to user requirements



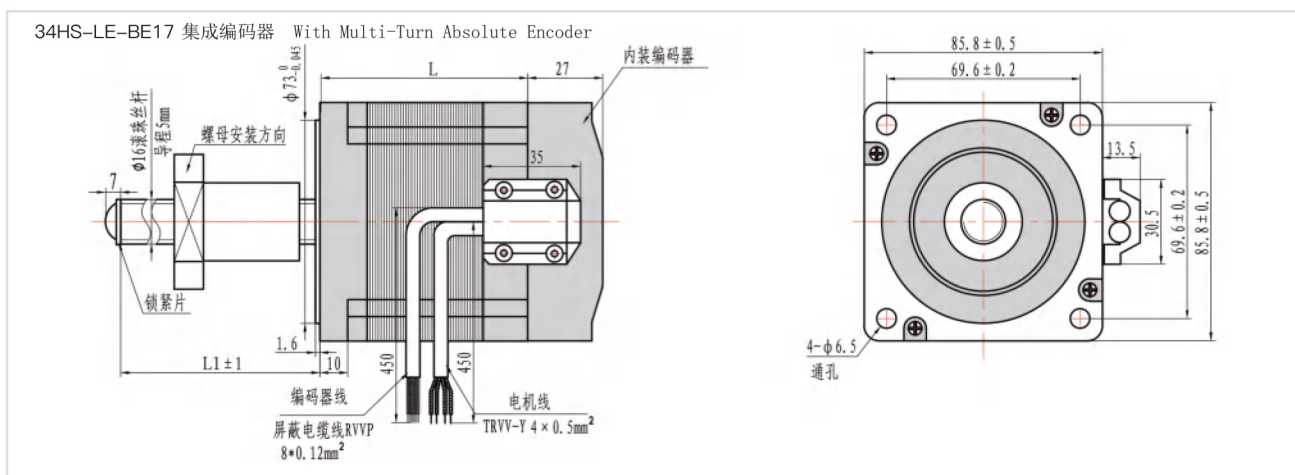
DIMENSIONS (IN MM)

*丝杆长度和端部加工（如轴承位）可以按用户要求加工生产

*Screw rod length and end processing (such as bearing position) can be processed and produced according to user requirements



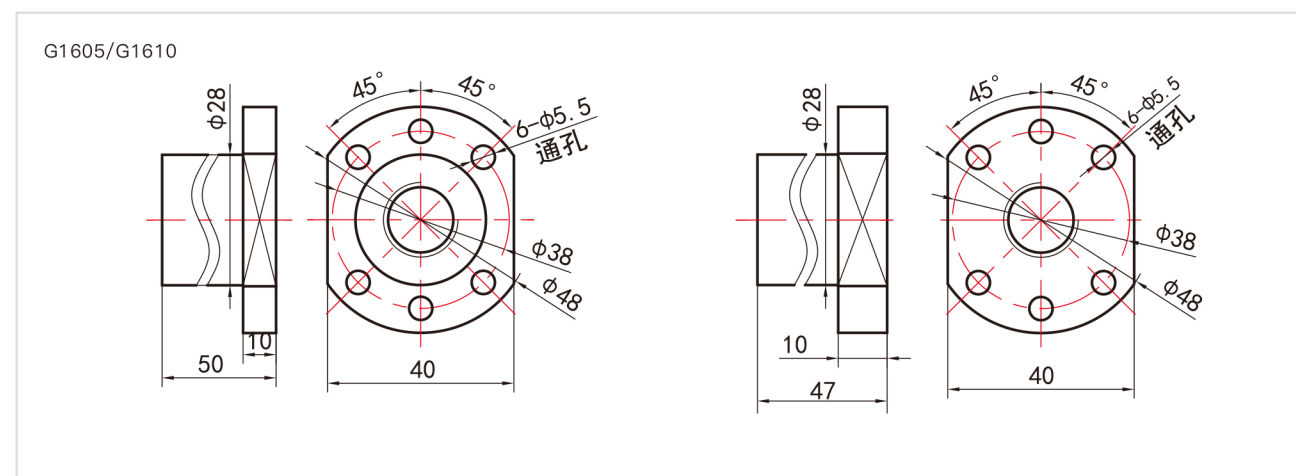
DIMENSIONS (IN MM)



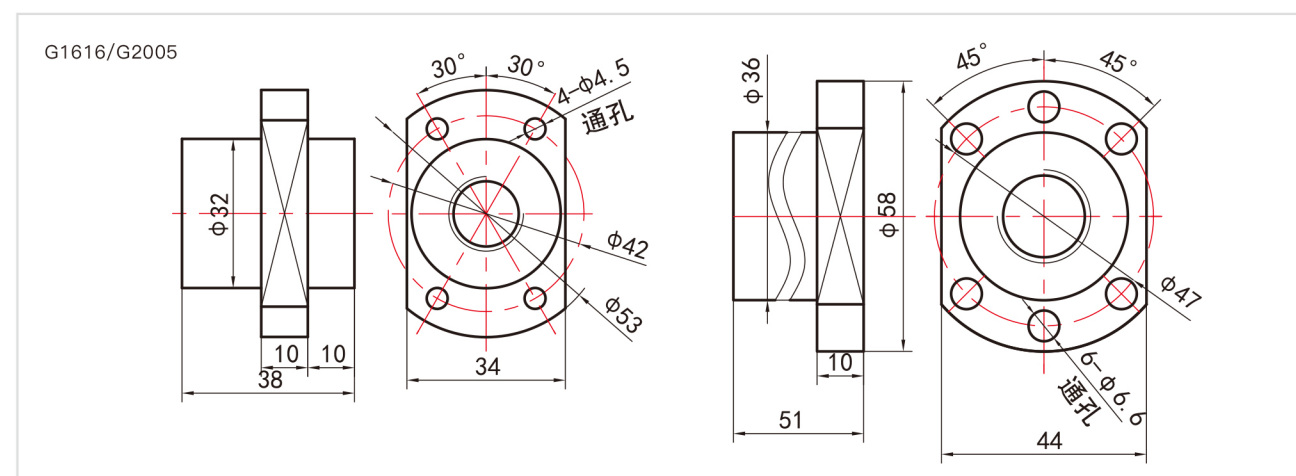
86mm法兰外部驱动式滚珠直线步进电机

External Linear Actuator With Ball Screw – NEMA 34

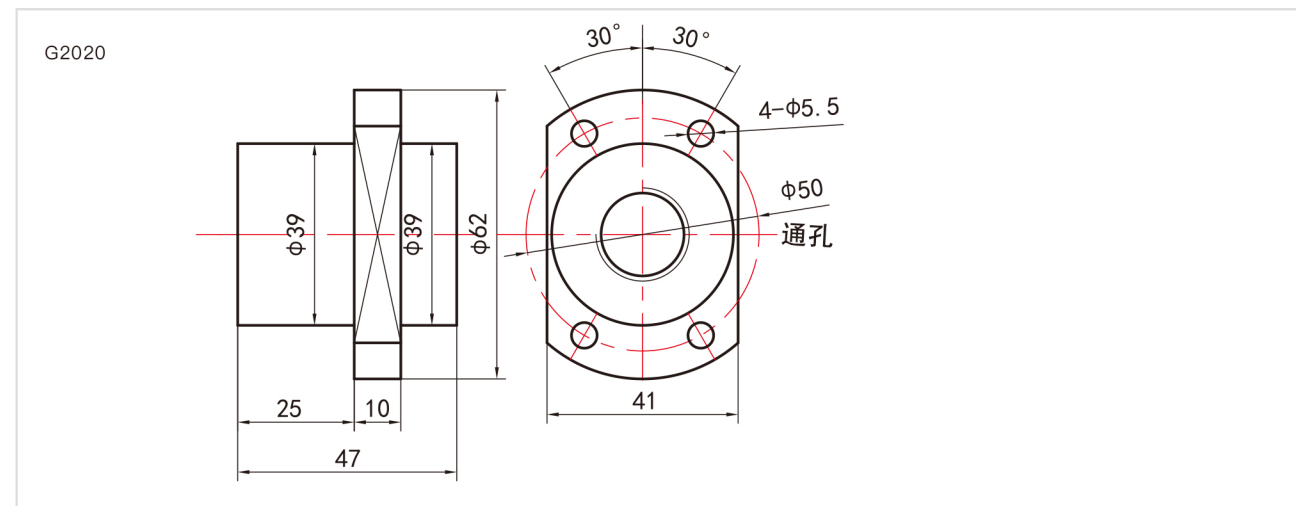
DIMENSIONS (IN MM)



DIMENSIONS (IN MM)



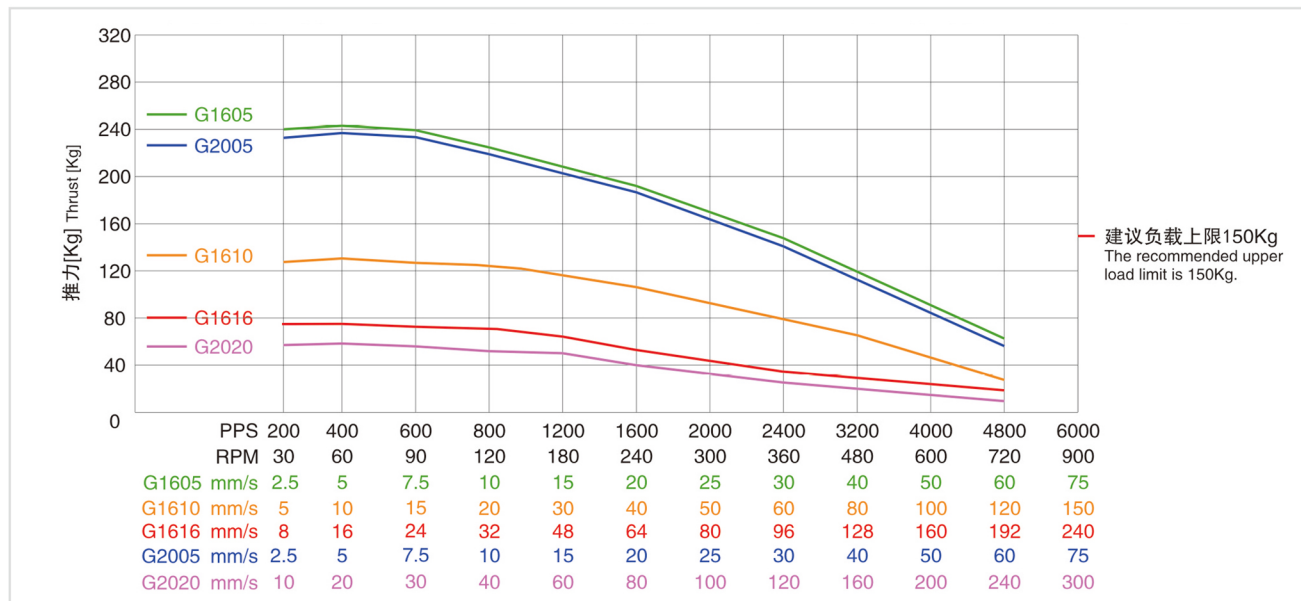
DIMENSIONS (IN MM)



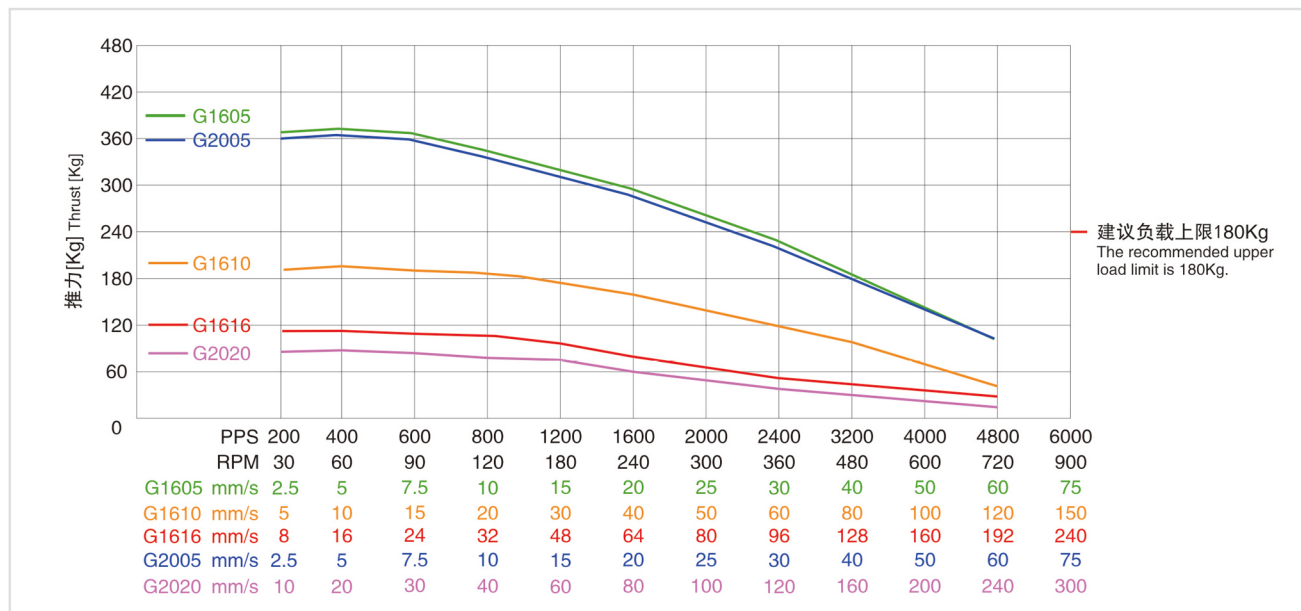
86mm法兰外部驱动式滚珠直线步进电机

External Linear Actuator With Ball Screw – NEMA 34

Force-Velocity Curve-34HS76



Force-Velocity Curve-34HS98



* 采用我们的驱动器，性能可以增强15%~20% By using our driver, performance can be improved by 15% to 20%